

***Temtop***

**Air Station User Manual**  
**P100/M100**

## Meet the Air Station

You are about to take the first step in controlling the air you breathe! Air Station is a comprehensive solution. By combining laser technology and electrochemical technology, Air Station can provide instant and accurate air quality level, see invisible threats in your air, and understand where they come from through the Air Station and its network with sub device.

### Get the Temtop App

Please search **Temtop** in App Store or Google Play, Or simply scan the QR code below to download the App:



## Air Quality Key Factors



PM2.5 (Particulate Matter 2.5) refers to fine particles with diameter of 2.5 micrometers or less. Due to its tiny size, PM2.5 can be absorbed into bloodstream and the lungs, which may cause eye and nose irritation, cough, asthma, emphysema, lung disease, heart attacks, cancer and etc.



PM10 (Particulate Matter 10) refers to particulates with a diameter of 10 micrometers or less. Due to the larger size, it's inhalable but penetrates no further than bronchi as larger particles can be filtered out by cilia and mucus of nose and throat. It usually considered as less harmful to health than PM2.5.



Carbon dioxide (CO2) refers to a colorless and odorless gas that is usually derived from the breath of humans and animals. High CO2 concentration means that fresh air or ventilation is required; otherwise, it may cause problems such as drowsiness, dizziness, loss of attention, and cognitive impairment.



Temperature & Humidity may often be ignored however they do have a significant impact on individual's well-being, comfort, health and safety as well as your property. High humidity may lead to an increase in household air pollutants especially the biological contaminants such as molds, bacteria, viruses and dust mites; cold, low humidity may cause nosebleeds, skin and respiratory irritations, dyspnea, static electricity and etc.

AQI (Air Quality Index) is a quick guide showing how clean or polluted the air is, using a range from 0 to 500, where higher index values indicate higher levels of air pollution and higher risks to health. There are six pollutants for AQI in US standard: PM2.5/10, O3, SO2, NO2, CO, where Temtop only focus on PM2.5/10 and follows the US EPA Standards to compute AQI.

## Overview

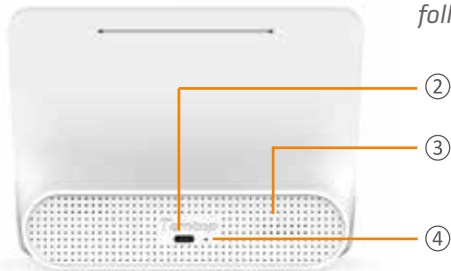


M100



P100

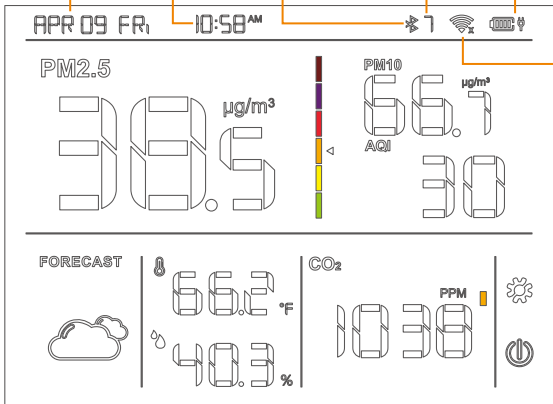
*\*P100 and M100 are only different in display interface, the following operation instructions all take M100 as an example.*



Serial Number	Describe
①	7.8-inch screen
②	Type-C charging interface
③	PM2.5/CO2 inlet and outlet
④	Long press 5s to enter smartlink mode

# Display

Date and day of the week    Time    Bluetooth    Numbers of sub device    Battery & charging indicator



Status	Meaning
	Connected
	Not connected
	Smartlink mode

AQI	level
$\geq 301$	< Hazardous
201-300	< Very Unhealthy
151-200	< Unhealthy
101-150	< Unhealthy for Sensitive Groups
51-100	< Moderate
0-50	< Good

CO <sub>2</sub> (PPM)	level
$\geq 2501$	< Poor
701-2500	< Fair
0-700	< Good



Sunny



Cloudy



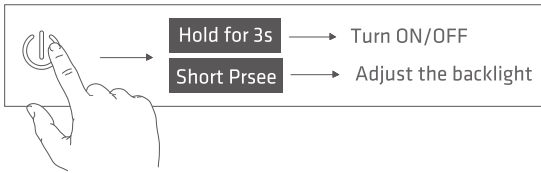
Rainy



Snowy

# Operations

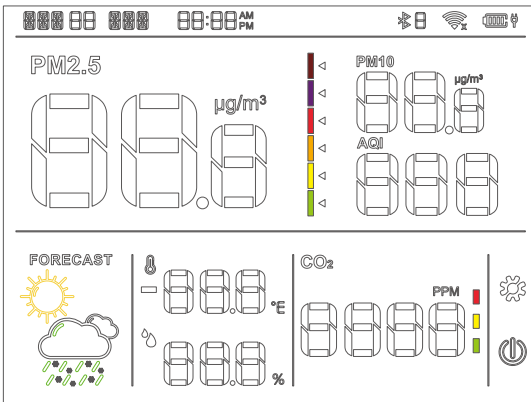
## ① Power key



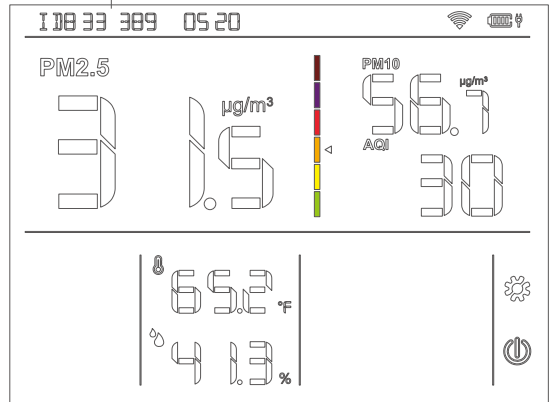
## ② Setting key



The last 10 digits of the slave's guid code



ON



Slave Machine  
Take P1 model as an example

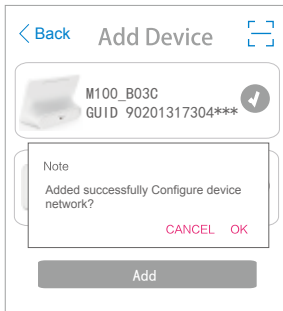
## WiFi Connection

Make sure you always have Bluetooth enabled on your phone and the app running in the background. Follow the instructions in the Temtop app to connect your Air Station. Here are the main steps of Connection.



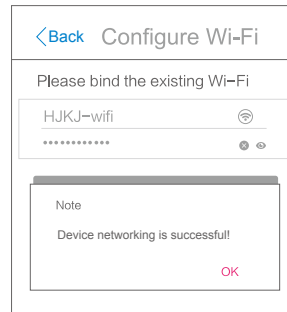
### Add Device

Bluetooth connection: The Bluetooth function of this device is turned on by default and there is no need to turn it on again. Select the device and add it.



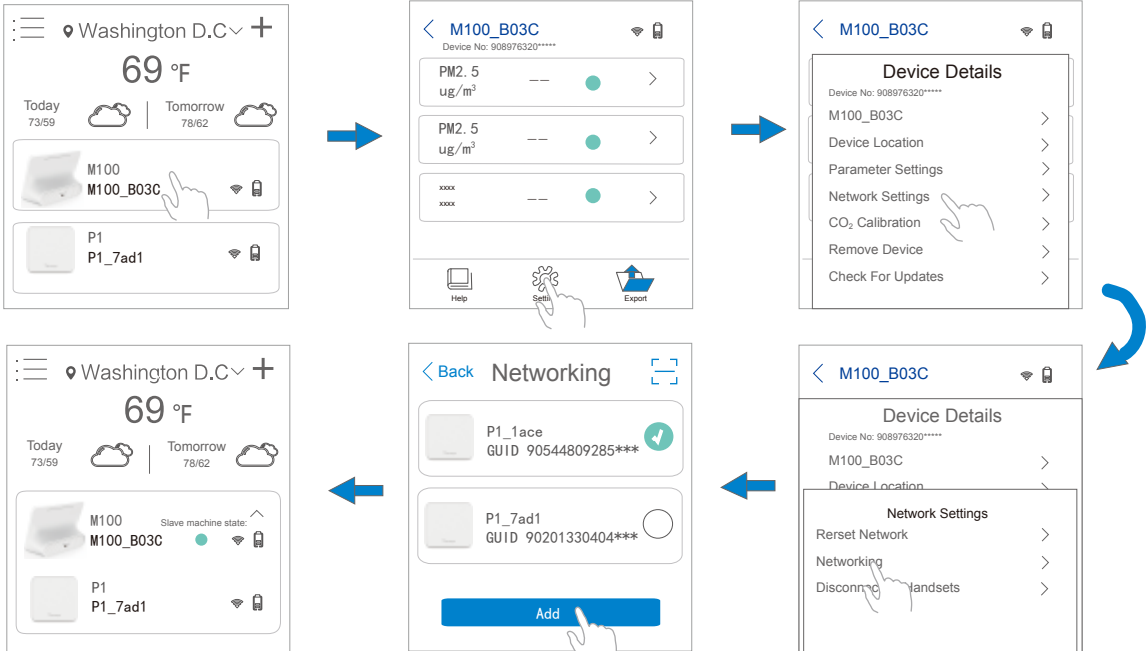
### Connect WiFi

M100+ needs to be configured under the same WiFi as the mobile phone. The password is the password currently connected to the mobile phone.



# Networking

After referring to the host adding method and adding slaves, the homepage displays all the added devices, and then click the 'setting' interface of the host to be networking to add, as shown in the flow chart below:





## Specifications

### Basic Specifications

Dimensions: 177\*65.5\*32mm  
6.9\*2.6\*1.2 in.

Display: 7.8" touch screen

Battery Capacity:4200mAh

Input: DC5V;2A

WiFi: 2.4GHz/5GHz

### Temperature

Measuring range: 0-50°C (32-122 °F)

Resolution: 0.1°C Accuracy:±1°C

### Humidity

Measuring range: 0-90% RH

Resolution: 1% RH Accuracy:±5% RH

### PM Sensor

#### PM2.5

Measuring range: 0-999 $\mu\text{g}/\text{m}^3$

Resolution: 0.1 $\mu\text{g}/\text{m}^3$

Accuracy:  $\pm 10\mu\text{g}/\text{m}^3$  (0~100 $\mu\text{g}/\text{m}^3$ )  
 $\pm 10\%$  (100~500 $\mu\text{g}/\text{m}^3$ )

#### PM10

Measuring range: 0-999 $\mu\text{g}/\text{m}^3$

Resolution: 0.1 $\mu\text{g}/\text{m}^3$

Accuracy:  $\pm 15\mu\text{g}/\text{m}^3$ (0~100 $\mu\text{g}/\text{m}^3$ )  
 $\pm 15\%$ (100~500 $\mu\text{g}/\text{m}^3$ )

### Gas sensor

#### CO<sub>2</sub>

Measuring range:0-5000PPM

Resolution:1PPM

Accuracy:±40PPM  $\pm$  3% reading

## What's Included



Air Station x1



User Manual x1



Type-C Cable x1

Note:P100/M100 host can be used alone or in combination with the sub device  
(the slave machine needs to be purchased separately)

*Note: A sincere effort was made to ensure that all information in this manual was current at the time of publication. However, final products may vary from the manual, and the specifications, features, and displays are subject to change. Please check with your Temtop representative for the latest information.*

## Warranty

Temtop warrants the included detector for 1 year from the date of original purchase. The item can be exchanged or returned within 30 days if the defect is not caused by artificial damage.

Item	Warranty Period
Detector	1 year included
Accessories	N/A

Before return or delivery for repair, please check if the following items are ready:

	Detector & Accessories	Complete Package	Proof of Purchase*	Gift (if any)
Return	✓	✓	✓	✓
Exchange	✓	✓	✓	
Repair	✓		✓	

*\*Including invoice, order number and etc.*

Temtop warranty does NOT include:

- Malfunction or damages caused by artificial damage or modification.
- Other deliberate damages.
- Damages caused by force majeure.

# *Temtop*

Made in China



V1.0